



IN SUPPORT OF



**St Oswald's
Hospice**

Created by:



The Snowman™
AND THE SNOWDOG

Presented by:



North Tyneside Council

**NORTH
OF TYNE**
~~~~~  
**COMBINED  
AUTHORITY**

© Snowdog Enterprises Ltd 2020

# WELCOME TO THE SNOWMAN™ AND THE SNOWDOG NORTH TYNESIDE TRAIL!

There are 20 magical sculptures in and around our town centres until the end of January 2021 and it's up to you to find them all!



The trail is inspired by The Snowman™ and The Snowdog, the animated sequel to Raymond Briggs' timeless picture book The Snowman. In the heart-warming sequel, a young boy builds a snowman and creates a snowdog with the remaining snow. At midnight both of his creations magically come to life.

12 stunning Snowman sculptures based on the much-loved 12 Days of Christmas song and eight uniquely designed Snowdogs are located in Wallsend, North Shields, Killingworth, Tynemouth and Whitley Bay.

Local artist Lisa Kirkbride's Partridge in a Pear Tree Snowman can be found outside retailer For The Love of the North at the famous Spanish City.

A print and Christmas card based on Lisa's design will be on sale there, online and also in selected St Oswald's Hospice shops. Proceeds will go to St Oswald's to support the vital work they do. They provide outstanding, specialist and expert care to adults and children with life-limiting conditions, and for their families too.

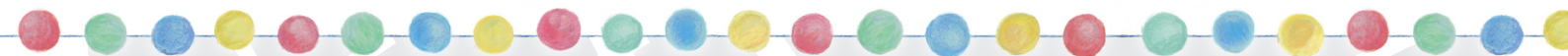
You can also donate right now on your phone. Text **SNOW** to **70460** to donate £3 to St Oswald's Hospice.

Texts cost £3 plus one standard rate message and you'll be opting in to hear more about the hospice's work and fundraising via telephone & SMS. If you'd like to give £3 but do not wish to receive marketing communications, text **SNOWNOINFO** to **70460**. Thank you.

The trail map is a guide and all Snowman & Snowdog locations are correct at the time of going to print. © Wild in Art 2020.

While every effort has been made to ensure that the information is correct and accurate, The Snowman™ and The Snowdog North Tyneside Trail and Wild in Art cannot accept responsibility in respect of errors, omissions, cancelled events or 'injured' Snowman and Snowdog sculptures. As this is a public event, Snowman and Snowdog sculptures may be moved between locations. Some Snowmen and Snowdogs may be inside venues; please check with venues in advance for opening times. Stay safe while discovering The Snowman™ and Snowdog North Tyneside Trail. Please help us to ensure that everyone can enjoy the trail safely by maintaining a safe distance, wearing a face covering when appropriate and being respectful to other trail visitors.





## NORTH SHIELDS

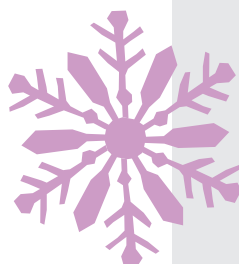


● The Killingworth Centre

White Swan Centre

17

## KILLINGWORTH



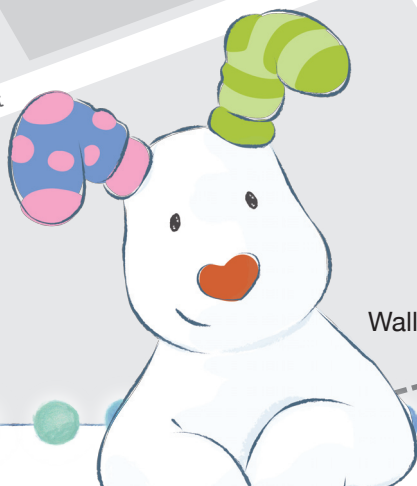
Royal Quays Outlet Centre

11

## ROYAL QUAYS



## WALLSEND





# SNOW PEOPLE

## **A PARTRIDGE IN A PEAR TREE** 5 (Spanish City Plaza)

**Artist: Lisa Kirkbride**

Lisa has created an eye-catching image in her bold, graphic style that combines her love of colour, patterns and florals. Using her signature colour palette of teal, shocking pink, lime and deep blue, the snowman is covered in an abundance of leaves, pears and pear flowers, with a whimsical partridge nestled on his chest.

## **TWO TURTLE DOVES** 11 (Royal Quays Outlet Centre)

**Artist: Megan Heather**

Megan has created a striking image which shows the love and friendship of two turtle doves. If you give one turtle dove to someone special at Christmas and keep the other, it is thought you will be friends forever. A silhouette of Santa and his reindeers along a trail of magic stars can be found on the back of the Snowman.

## **THREE FRENCH HENS** 7 (outside Tynemouth Priory and Castle)

**Artist: Lei-Mai LeMaow**

Artist Lei-Mai has painted Three French Hens in her signature tongue-in-cheek style. The Snowman proudly bares a number three on his chest in the colours of the French flag and stands against a bright orange background. Three chic hens wearing berets peak out from beneath falling snow. You can almost hear them squawking 'Oui!'

## **FOUR CALLING BIRDS** 12 (Forum Shopping Centre)

**Artist: Jenny Leonard**

Jenny wanted to create a light-hearted and fun design in her signature style to brighten up a cold wintry day with a cheeky modern play on words.

## **FIVE GOLD RINGS** 10 (Bedford Street)

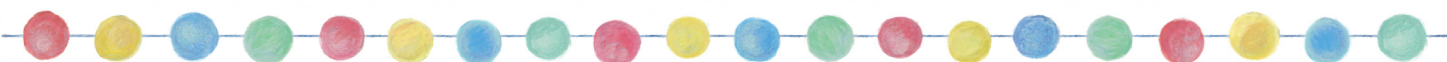
**Artist: Adam Pekar**

This Snowman is wearing the first ring, a traditional Christmas wreath, around his neck. He is stood on a spinning wheel to represent silk spinning. The two rings on his front are an industrial roller chain and a diamond ring, representing economic development. He is wearing a life ring in case he decides to take a swim in the Tyne!

## **SIX GEESE A LAYING** 17 (The Killingworth Centre)

**Artist: Matilda Elizabeth**

In a magical winter scene, the six geese it depicts are snugly nesting on their clutches of eggs, under towering snow-capped mountains and the majestic glow of the twinkling North Star.





# SNOW PEOPLE (continued)

## **SEVEN SWANS A SWIMMING** 13 (Forum Shopping Centre)

**Artist: Laura-Kate Chapman**

Featuring 21 swans (a multiple of seven) to create a repeating pattern. Laura-Kate concentrates on the iconic long neck and impressive wingspan. The Snowman himself has been transformed into a swan - he has an orange nose like a swan's beak and stands in a pool of icy blue water.

## **EIGHT MAIDS A MILKING** 3 (Norham Road/Park View)

**Artist: Donna Newman**

Donna has transformed The Snowman into a giant cow! The design sees Scandinavian inspired milkmaids playfully dancing their way around the cow on ice skates. To make it even more festive, she has embellished the design with stylised festive trees and snowflakes.

## **NINE LADIES DANCING** 8 (Beacon Centre)

**Artist: Lizzie Chapman**

Nine ladies dance and sing together in a winter wonderland, snow crunching under their boots, hats and scarves keeping them warm in the cold evening air. Their brightly coloured coats contrast with the frosty colours of the snow. All they need is a cosy mug of hot chocolate!

## **TEN LORDS A LEAPING** 19 (Bedford Street)

**Artist: Hammo**

Ten fictional Lords leap across a snowy sky in their, rather festive looking, red and white peerage robes. Artist Hammo has painted them to reflect and celebrate the diversity of Britain.

## **ELEVEN PIPERS PIPING** 6 (Park View Shopping Centre)

**Artist: Jess Loveday**

This joyous orchestral ensemble of Christmas critters have rehearsed hard all year to delight you in this fun and festive take on the Eleven Pipers Piping theme.

## **TWELVE DRUMMERS DRUMMING** 16 (outside Aldi)

**Artist: Jessica Perrin**

This golden brown Snowman evokes the spirit of Christmas ... you can almost smell the sweet aroma of gingerbread! Look out for a marching band of twelve tiny drumming mice on his back.



# SNOWDOGS

Discover the Snowdog figurines online at:  
[www.snowdogarttrails.co.uk/shop](http://www.snowdogarttrails.co.uk/shop)

**CLASSIC** 14 (Bandstand)

**Artist: Wild in Art**

Cobbled together by young Billy in memory of his late four-legged companion, and coming to life in the night, the Snowdog symbolises comfort, precious company and treasured memories.

**ROSY POSY** 18 (North Shields Fish Quay)

**Artist: Jessica Perrin**

Inspired by the beauty of the camellia, poinsettia and cyclamen flowers, Rosy Posy is a treat for the eyes. Berries and ivy complete these beautiful posies.

**STARRY NIGHT** 4 (between Hound Dog Music and Sea Palace)

**Artist: Annie Laughrin**

Dotted with reflective silver stars against a royal blue background, Starry Night Snowdog was designed by Benjamin Fowler and Heather Penten.

**ROODLE** 1 (Whitley Bay Metro Station)

**Artist: Wild in Art**

Inspired by the Goldendoodle crossbreed, fun loving and excitable Roodle likes to jump into everything head-first!

**GINGER** 2 (Whitley Road)

**Artist: Donna Newman**

Deliciously decorated with royal icing, sprinkles and candy canes, this gingerbread dog looks good enough to eat!

**ELF** 9 (Saville Street)

**Artist: Amanda Quellin**

Once he's finished being part of the trail, this cheeky little Elf will dash over to the North Pole to help Father Christmas with all of the preparations for Christmas Eve!

**RU-DOG** 15 (High Street East)

**Artist: Donna Newman**

Rudolph the red nose reindeer has been transformed into Ru-dog! Artist Donna Newman has added a cosy jumper and the iconic shiny red nose.

**BARK! THE HERALD ANGELS SINGS** 20 (ASDA)

**Artist: Jessica Perrin**

Featuring a fun and colourful display of Nativity characters set against dark starry sky. What Christmas carols do you think they are singing?

